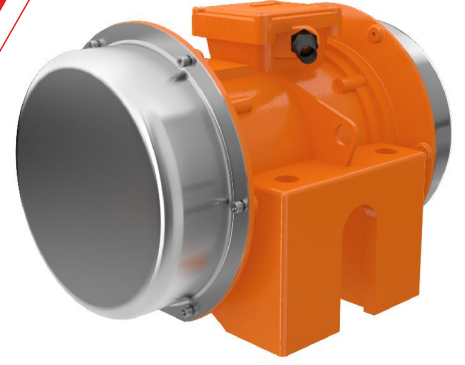


Kem-P® Vibration Motors

CPV SERIES



✓

- KALITE / QUALITY
- TASARIM / DESIGN
- TEKNOLOJİ / TECHNOLOGY
- YENİLİK / INNOVATION
- GÜÇ / POWER
- TECRÜBE / KNOW-HOW
- SERVIS / SERVICE
- PERFORMANS / PERFORMANCE
- VERİMLİLİK / PRODUCTIVITY



www.kem-p.com

Model Type	rpm		Santrüfuj Kuvveti Centrifugal Force				(*)Statik Moment Static Moment		Ağırlık Weight		Giriş Gücü Input Power		Nominal Akım Nom. Current		I _a / I _w	
			(Kg/F)		(KN)		(Kgmm)		(Kg)		(W)		(A)			
	50Hz	60Hz	50Hz	60Hz	50Hz	60Hz	50Hz	60Hz	50Hz	60Hz	50Hz	60Hz	400V 50Hz	460V 60Hz	50Hz	60Hz
CPV 20/10	1000	1200	2064	2000	20,24	19,62	1847,0	1242,6	130	117	1700	2100	3,50	4,15	5,50	5,50
CVP 20/15	1500	1800	2568	2520	2519	24,72	1021,0	695,8	112	112	2200	2400	3,40	4,00	7,30	7,30
CPV 30/15	1500	1800	3150	3142	30,90	30,82	1252,4	867,5	116	116	2200	2400	3,40	4,00	7,30	7,30
CPV 20/3	3000	3600	2368	2346	23,23	23,01	235,4	161,9	94	92,5	3300	4000	5,90	7,00	5,10	5,10
CPV 25/3	3000	3600	2555	2507	25,06	24,59	254,0	173,1	95	93,5	3300	4000	5,90	7,00	5,10	5,10
CVP 30/3	3000	3600	3008	2907	29,5	28,52	200,7	204,82	96,5	94,5	3300	4000	5,90	7,00	5,10	5,10

(*) Working moment = 2x static moment

Gövde Ölçüleri - Overall Dimensions (mm)

Model Type	A	G
CPV 20/10 (50Hz)	559	147
CPV 20/10 (60Hz)	489	112
CVP 20/15	489	112
CPV 30/15	489	112
CPV 20/3	400	67
CPV 25/3	400	67
CVP 30/3	400	67

